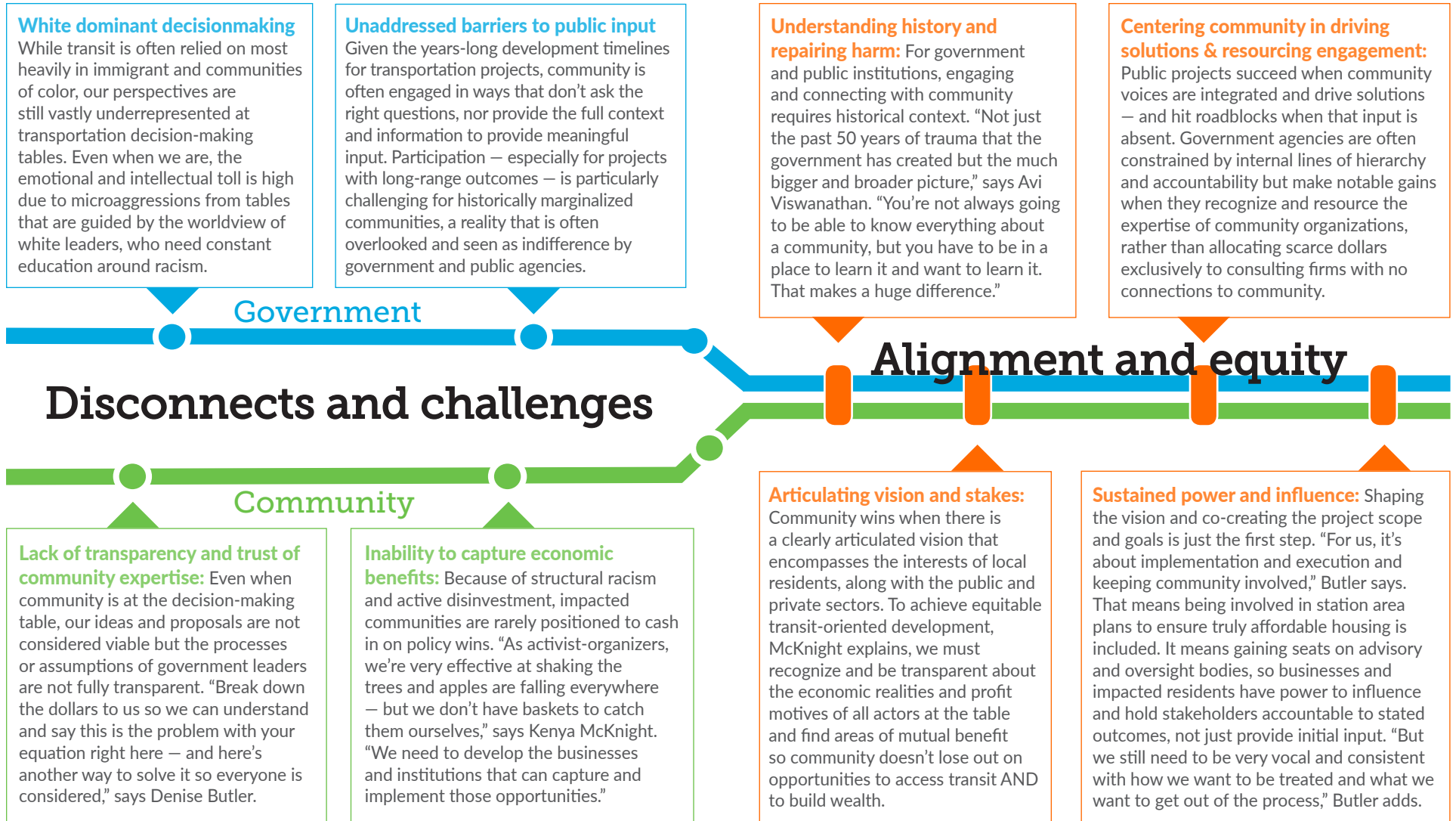




Actualizing Equity 2019 : From Principles to Practice

Holding the Line: Equity in Transit Oriented Development

At our **May 2019 Actualizing Equity event**, we explored how organizers have mobilized – and are mobilizing – to integrate affordable housing, health, economic development and other equity issues into the visions and implementation of coming transit investments. We heard from Denise Butler, Program Manager for African Career, Education and Resource Inc; Nestor Garcia, Community Outreach Director for the Harrison Neighborhood Association; and Kenya McKnight, Founder and President of the Black Women's Wealth Initiative – with facilitation from Avi Viswanathan, Program Director for the Nexus Community Engagement Institute at Nexus Community Partners.



Resources and tools to advance equitable transit-oriented development

Southwest LRT Equity Commitments

The Southwest LRT transitway is a critical opportunity to increase economic prosperity and advance racial equity in North Minneapolis, as well as across the region. The Alliance supports a network of community-based organizations focused on how communities of color can benefit from the project, which developed targeted strategies intended to create wealth and economic opportunity.

Examples of commitments include:

- Investing in infrastructure and amenities like heated bus shelters and transfer stations
- Expanding affordable housing by funding housing choices affordable to residents and workers within corridor
- Working with local business districts and neighborhood associations on station planning
- Developing a system that connects job seekers with employment and entrepreneurial opportunities

[Download the Commitments](#)

Blue Line Coalition Housing Policy Platform

During the engagement process with residents along the Bottineau LRT Corridor, the Blue Line Coalition found that concerns around housing affordability and displacement were common themes. They identified an increase in housing costs will have a significant impact on the most vulnerable corridor residents. Currently, 42% of Bottineau Corridor households are cost-burdened and 56% of non-white corridor residents live in areas experiencing development pressure.

So the Blue Line Coalition created a housing policy platform calling on elected leaders to enact the following policies:

- Just Cause Eviction
- Tenant Relocation Assistance
- Notification of Sale and Right of First Purchase
- Inclusionary Housing
- Affordable Housing Trust Fund
- Affordable Housing Acquisition Fund

[Access the Platform](#)

Equitable Development Principles & Scorecard

The Alliance partnered with the Harrison Neighborhood Association, Umoja Community Development Corporation, and members of the Community Engagement Steering Committee to create the Equitable Development Principles & Scorecard, which helps communities, developers and planners ensure that the principles and practices of equitable development, environmental justice, and affordability are available to all residents.

The tool includes metrics around:

- Community Engagement
- Transportation
- Housing
- Land Use
- Economic Development

Organizations have adapted the scorecard for their particular neighborhood needs, to address transportation and as a tool to help determine grant allocation.

[Access the scorecard and review case studies](#)

Speakers

Denise Butler

African Career, Education and Resource, Inc (ACER)
dbutler@acerinc.org

Nestor Garcia

Harrison Neighborhood Association
nestor@hnampis.org

Kenya McKnight

Black Women's Wealth Alliance
kenya@bwwa-us.com

Avi Viswanathan

Nexus Community Partners
aviswanathan@nexuscpc.org

[Learn more about the Actualizing Equity event series and resources at](#)

thealliancetc.org/actualizing-equity